

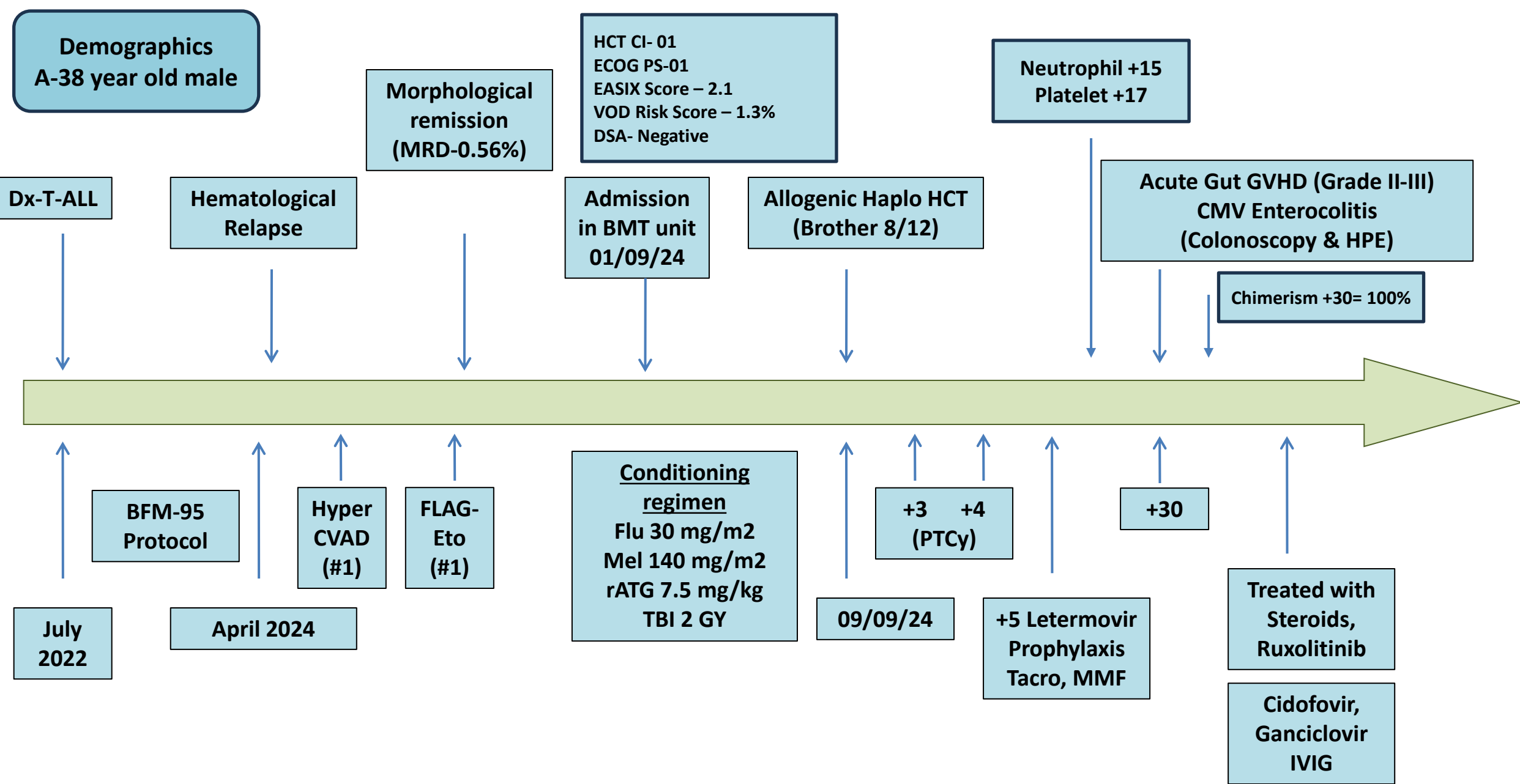
Stem cell boost as a salvage strategy for Poor Graft Function after Allogenic Haploidentical HSCT in Relapsed T-cell ALL

Dr. Grishma Sukhwai

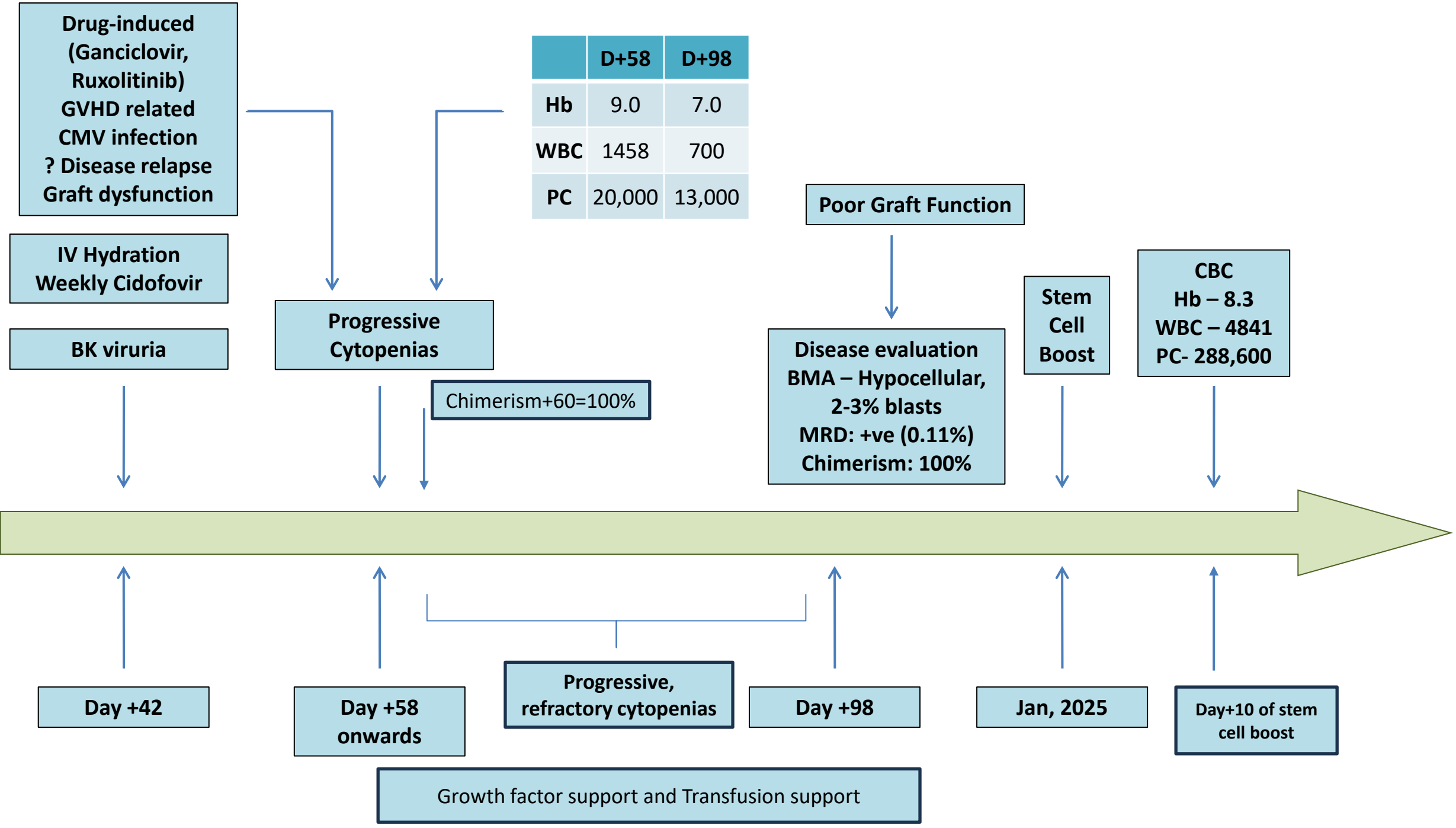
MBBS, MD, DrNB (Clinical Haematology)- 2nd year

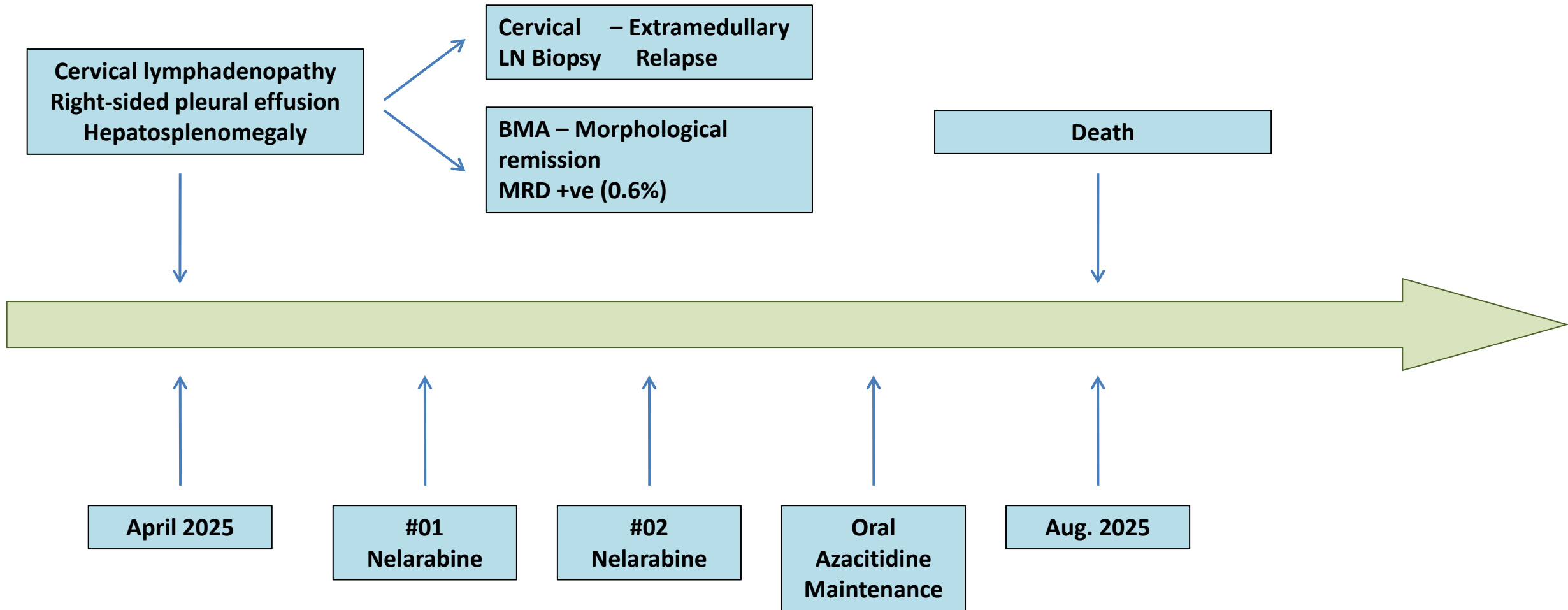
Department of Haemato-Oncology, Bone Marrow Transplant & Cellular Therapy

Apollo Hospital International Limited, Gandhinagar

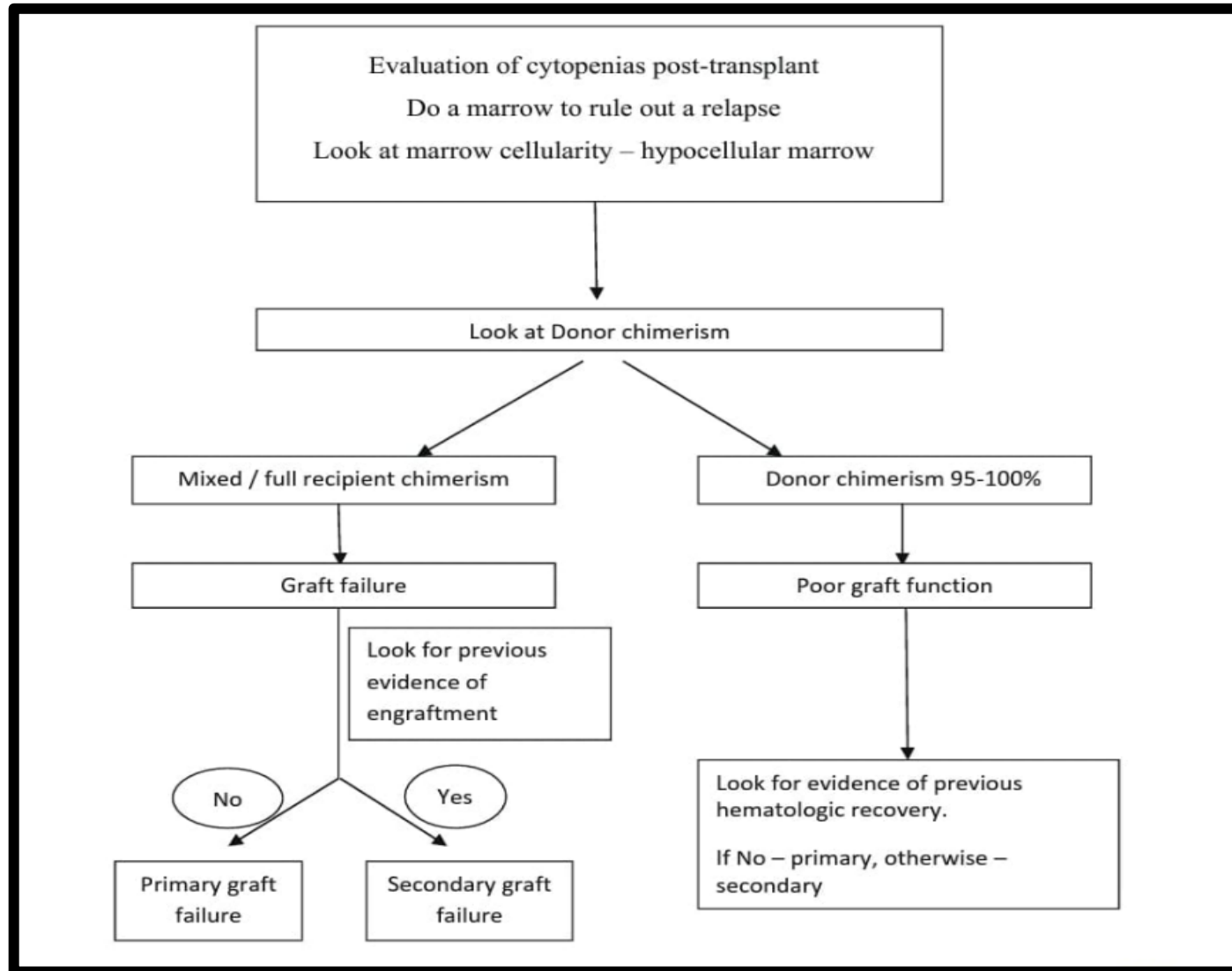


	D+58	D+98
Hb	9.0	7.0
WBC	1458	700
PC	20,000	13,000





APPROACH TO POST TRANSPLANT CYTOPENIAS



Questions to the experts

1. What would be the best approach and management of such cases of PGF?
2. What would be the therapeutic modalities in the patient with extramedullary relapse with bony Mets ?